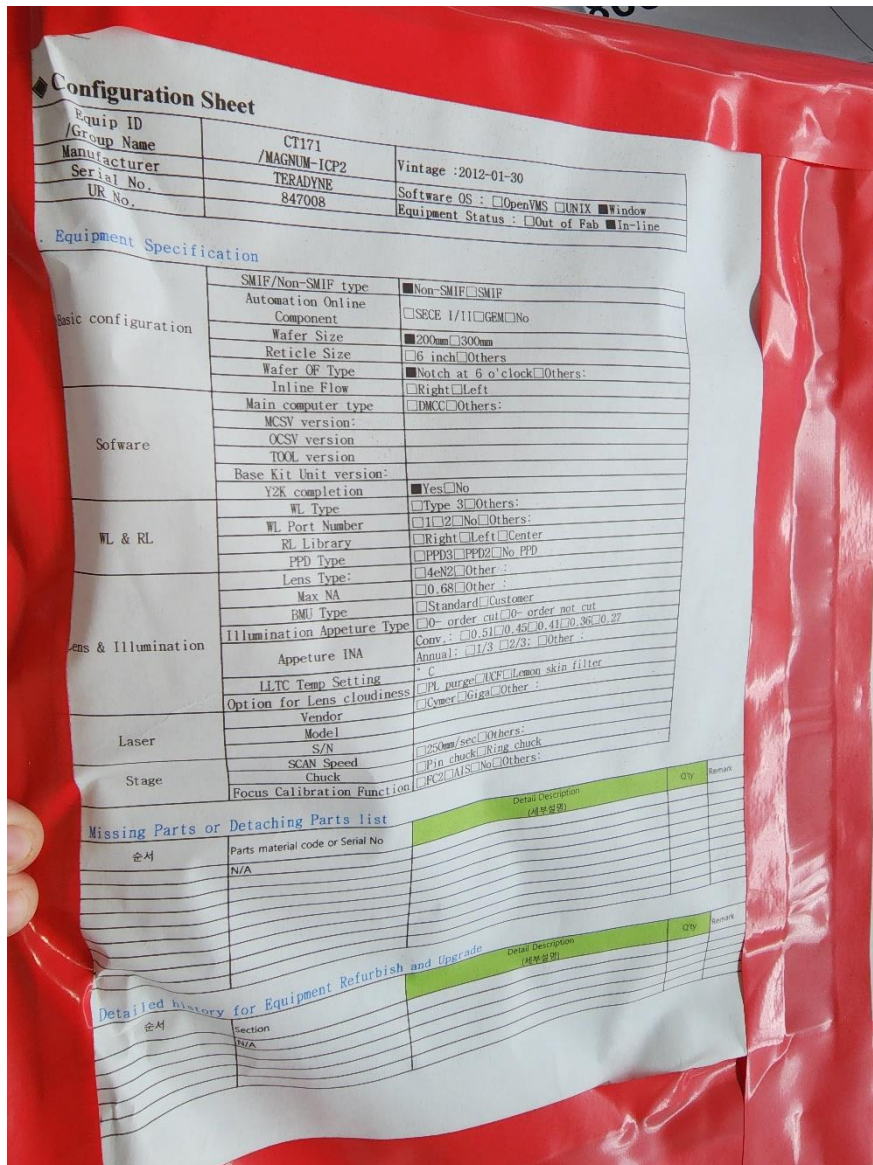


TERADYNE MAGNUM II ICP

Manufacturer	Teradyne
Model	MAGNUM II ICP
Description	Tester
Year of manufacture	2012
Serial number	847008
Site size	8" / 12"
Remark	"Main, W/S, Illuminator SAB: 8EA (P/N Unknown)"



This data sheet is provided to you on a strictly confidential basis and contains commercially sensitive and valuable information. No part of its content may be provided to any person without our prior written consent. This data sheet is not an offer capable of acceptance. The information contained in this data sheet is, to our knowledge and information, accurate, but it may contain typographical errors and we do not warrant the completeness or accuracy of the information contained herein. Any offer by you to purchase of the equipment described in this data sheet shall be subject to our standard terms and conditions of sale. The Equipment being quoted is described as used, and is being sold "AS IS, WHERE IS" with all defects, known or unknown, entirely at Buyer's own risk and reliance solely upon Buyer's own inspection of the goods and without reliance upon any representation or description by Seller or seller's representative concerning the goods.

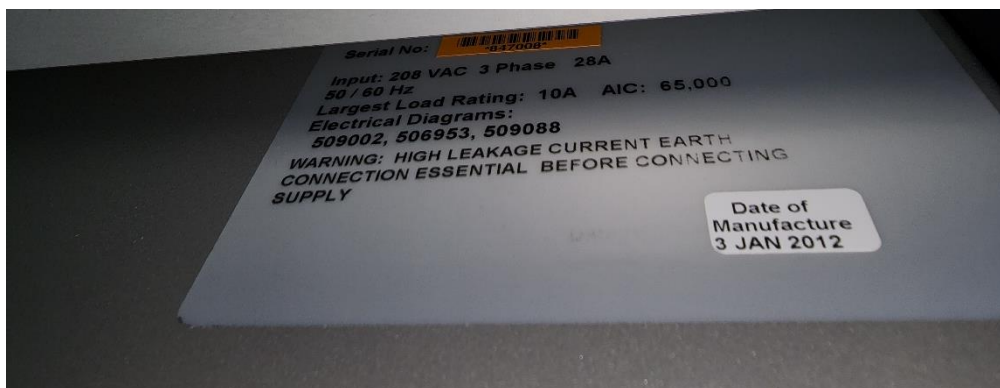
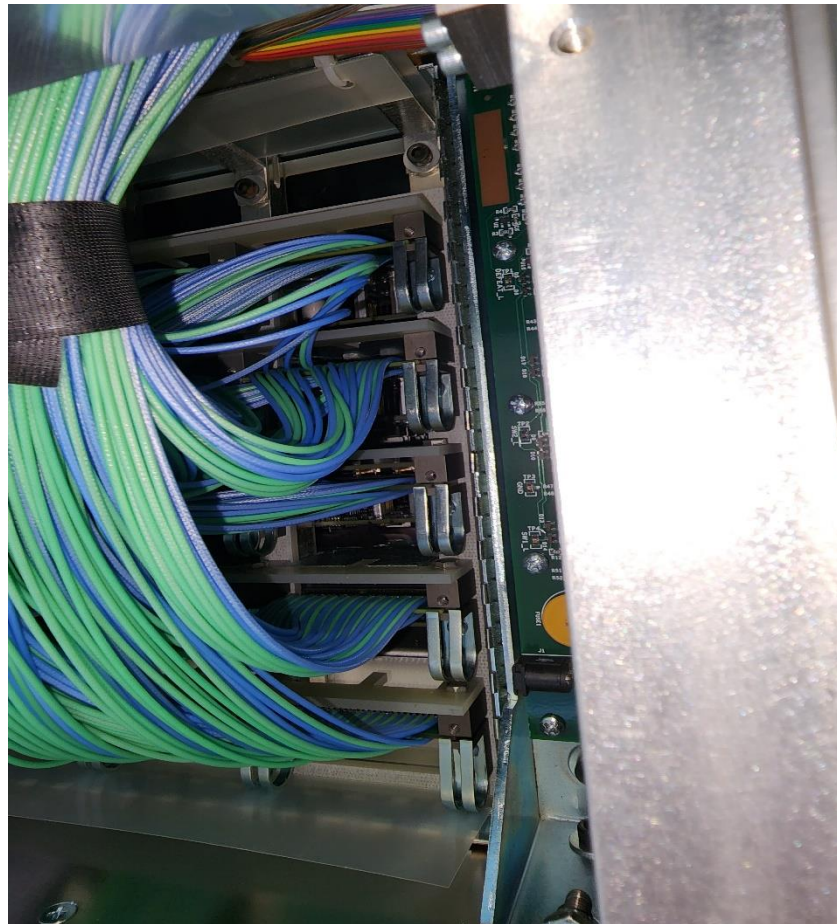


This data sheet is provided to you on a strictly confidential basis and contains commercially sensitive and valuable information. No part of its content may be provided to any person without our prior written consent. This data sheet is not an offer capable of acceptance. The information contained in this data sheet is, to our knowledge and information, accurate, but it may contain typographical errors and we do not warrant the completeness or accuracy of the information contained herein. Any offer by you to purchase of the equipment described in this data sheet shall be subject to our standard terms and conditions of sale. The Equipment being quoted is described as used, and is being sold "AS IS, WHERE IS" with all defects, known or unknown, entirely at Buyer's own risk and reliance solely upon Buyer's own inspection of the goods and without reliance upon any representation or description by Seller or seller's representative concerning the goods.





This data sheet is provided to you on a strictly confidential basis and contains commercially sensitive and valuable information. No part of its content may be provided to any person without our prior written consent. This data sheet is not an offer capable of acceptance. The information contained in this data sheet is, to our knowledge and information, accurate, but it may contain typographical errors and we do not warrant the completeness or accuracy of the information contained herein. Any offer by you to purchase of the equipment described in this data sheet shall be subject to our standard terms and conditions of sale. The Equipment being quoted is described as used, and is being sold "AS IS, WHERE IS" with all defects, known or unknown, entirely at Buyer's own risk and reliance solely upon Buyer's own inspection of the goods and without reliance upon any representation or description by Seller or seller's representative concerning the goods.



All Equipment is offered subject to prior sale. This item will be quoted based upon specific terms and configuration required.

Interested parties may contact PTW ASIA PTE LTD at: [ask@ptwsingapore.com](mailto:ask@ptwsingapore.com)

Visit our web site at [www.ptwsingapore.com](http://www.ptwsingapore.com) © 2022 PTW ASIA PTE LTD

This data sheet is provided to you on a strictly confidential basis and contains commercially sensitive and valuable information. No part of its content may be provided to any person without our prior written consent. This data sheet is not an offer capable of acceptance. The information contained in this data sheet is, to our knowledge and information, accurate, but it may contain typographical errors and we do not warrant the completeness or accuracy of the information contained herein. Any offer by you to purchase of the equipment described in this data sheet shall be subject to our standard terms and conditions of sale. The Equipment being quoted is described as used, and is being sold "AS IS, WHERE IS" with all defects, known or unknown, entirely at Buyer's own risk and reliance solely upon Buyer's own inspection of the goods and without reliance upon any representation or description by Seller or seller's representative concerning the goods.