



**PTW GROUP**

## **NIKON NSR-1755i7B STEP AND REPEAT SYSTEM**

|                            |   |
|----------------------------|---|
| <b>Manufacturer</b>        | NIKON   |
| <b>Model</b>               | NSR-1755i7B   |
| <b>Description</b>         | STEP AND REPEAT SYSTEM  |
| <b>Other information</b>   |   |
| <b>Year of manufacture</b> | 09/1991   |
| <b>Serial number</b>       | 94527   |
| <b>Wafer Size</b>          | 150mm & 200mm   |
| <b>Condition</b>           | As is   |
| <b>Product description</b> | <ul style="list-style-type: none"><li>➤ Full-featured lithography platform</li><li>➤ Fourth-generation scanner</li><li>➤ Fully integrated lithography control system</li><li>➤ Suite of advanced lithography processes</li><li>➤ Two-stage architecture enabling high overlay precision and defect detection</li><li>➤ Exposure times as fast as 10ms</li></ul> |

This data sheet is provided to you on a strictly confidential basis and contains commercially sensitive and valuable information. No part of its content may be provided to any person without our prior written consent. This data sheet is not an offer capable of acceptance. The information contained in this data sheet is, to our knowledge and information, accurate, but it may contain typographical errors and we do not warrant the completeness or accuracy of the information contained herein. Any offer by you to purchase of the equipment described in this data sheet shall be subject to our standard terms and conditions of sale. The Equipment being quoted is described as used, and is being sold "AS IS, WHERE IS" with all defects, known or unknown, entirely at Buyer's own risk and reliance solely upon Buyer's own inspection of the goods and without reliance upon any representation or description by Seller or seller's representative concerning the goods.



## PTW GROUP



This data sheet is provided to you on a strictly confidential basis and contains commercially sensitive and valuable information. No part of its content may be provided to any person without our prior written consent. This data sheet is not an offer capable of acceptance. The information contained in this data sheet is, to our knowledge and information, accurate, but it may contain typographical errors and we do not warrant the completeness or accuracy of the information contained herein. Any offer by you to purchase of the equipment described in this data sheet shall be subject to our standard terms and conditions of sale. The Equipment being quoted is described as used, and is being sold "AS IS, WHERE IS" with all defects, known or unknown, entirely at Buyer's own risk and reliance solely upon Buyer's own inspection of the goods and without reliance upon any representation or description by Seller or seller's representative concerning the goods.



PTW GROUP

**NIKON CORPORATION**  
201-9, OH-AZA, MIIZUGAHARA  
KUMAGAYA, SAITAMA, JAPAN  
MANUFACTURED SEP 1991

**Nikon STEP AND REPEAT SYSTEM**

MODEL NSR-1755i7B No. 94527

THIS PRODUCT COMPLIES WITH HHS PERFORMANCE STANDARDS FOR LASER PRODUCT 21 CFR 1040.10 AND 1040.11.

**CAUTION**

LASER RADIATION – DO NOT STARE INTO BEAM

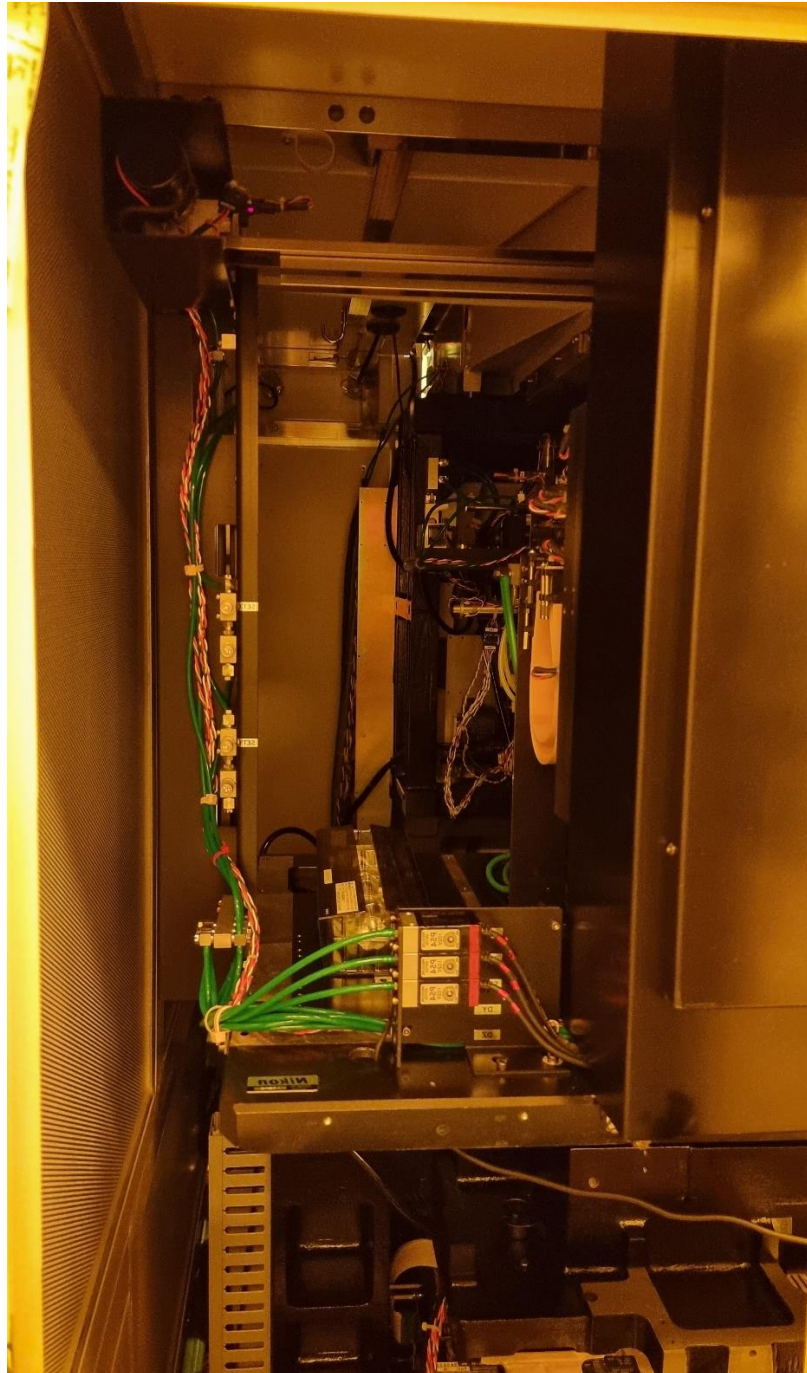
 <1mW He-Ne LASER  
CLASS II LASER PRODUCT



This data sheet is provided to you on a strictly confidential basis and contains commercially sensitive and valuable information. No part of its content may be provided to any person without our prior written consent. This data sheet is not an offer capable of acceptance. The information contained in this data sheet is, to our knowledge and information, accurate, but it may contain typographical errors and we do not warrant the completeness or accuracy of the information contained herein. Any offer by you to purchase of the equipment described in this data sheet shall be subject to our standard terms and conditions of sale. The Equipment being quoted is described as used, and is being sold "AS IS, WHERE IS" with all defects, known or unknown, entirely at Buyer's own risk and reliance solely upon Buyer's own inspection of the goods and without reliance upon any representation or description by Seller or seller's representative concerning the goods.



## PTW GROUP



This data sheet is provided to you on a strictly confidential basis and contains commercially sensitive and valuable information. No part of its content may be provided to any person without our prior written consent. This data sheet is not an offer capable of acceptance. The information contained in this data sheet is, to our knowledge and information, accurate, but it may contain typographical errors and we do not warrant the completeness or accuracy of the information contained herein. Any offer by you to purchase of the equipment described in this data sheet shall be subject to our standard terms and conditions of sale. The Equipment being quoted is described as used, and is being sold "AS IS, WHERE IS" with all defects, known or unknown, entirely at Buyer's own risk and reliance solely upon Buyer's own inspection of the goods and without reliance upon any representation or description by Seller or seller's representative concerning the goods.



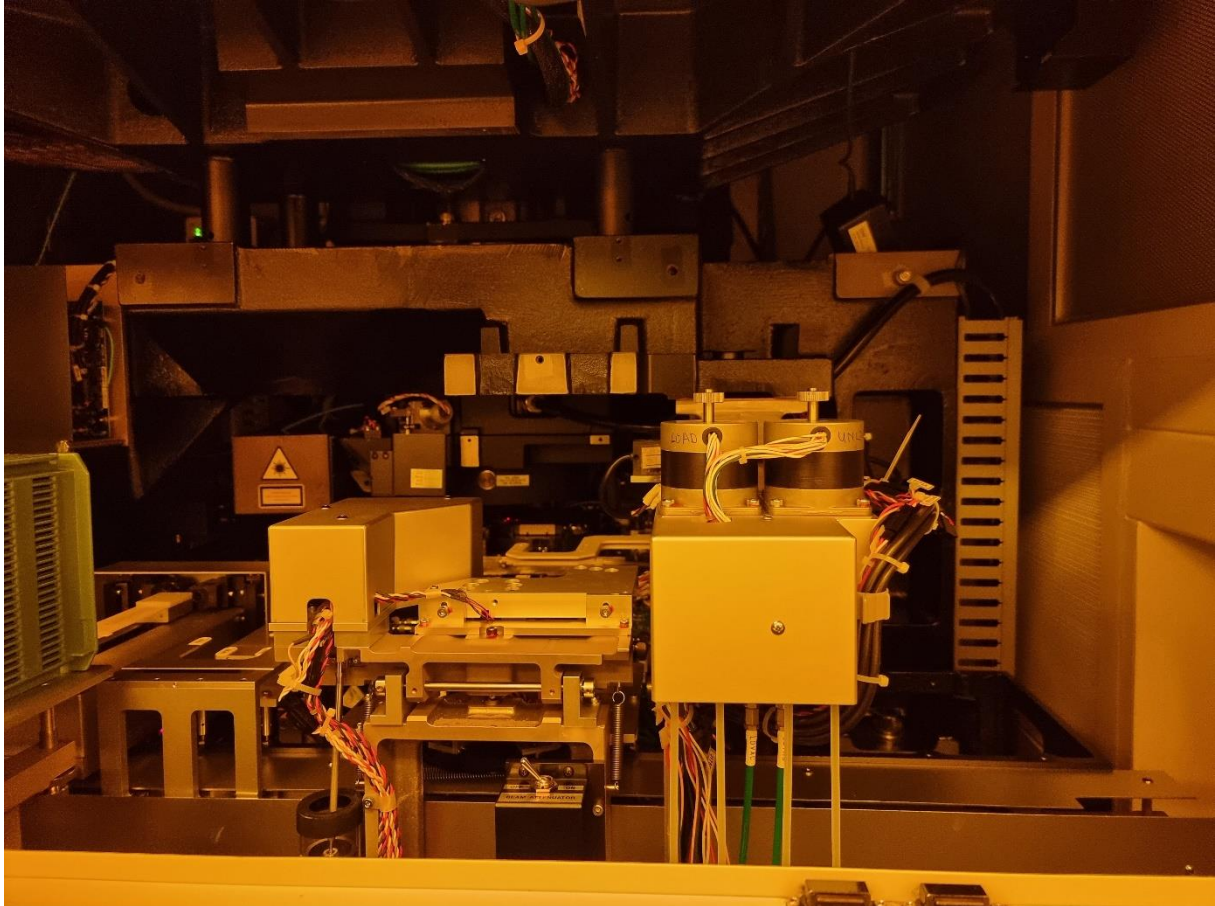
## PTW GROUP



This data sheet is provided to you on a strictly confidential basis and contains commercially sensitive and valuable information. No part of its content may be provided to any person without our prior written consent. This data sheet is not an offer capable of acceptance. The information contained in this data sheet is, to our knowledge and information, accurate, but it may contain typographical errors and we do not warrant the completeness or accuracy of the information contained herein. Any offer by you to purchase of the equipment described in this data sheet shall be subject to our standard terms and conditions of sale. The Equipment being quoted is described as used, and is being sold "AS IS, WHERE IS" with all defects, known or unknown, entirely at Buyer's own risk and reliance solely upon Buyer's own inspection of the goods and without reliance upon any representation or description by Seller or seller's representative concerning the goods.



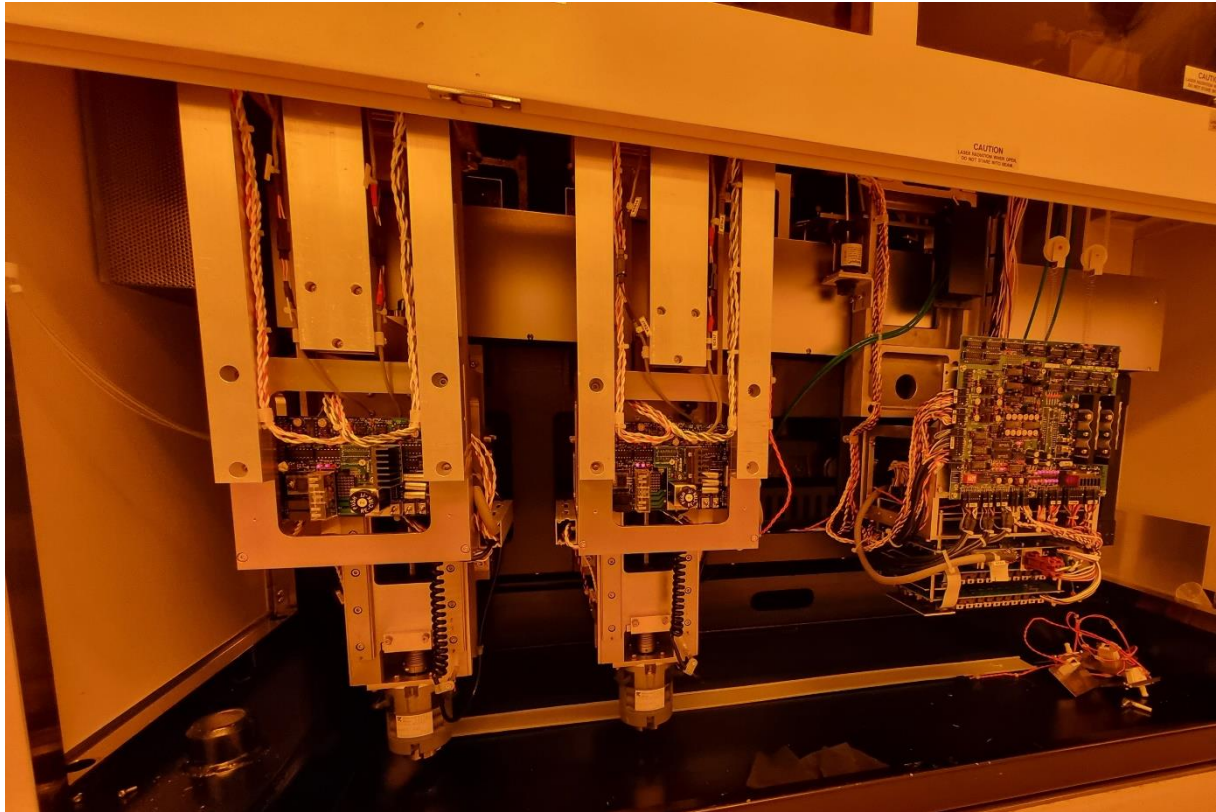
## PTW GROUP



This data sheet is provided to you on a strictly confidential basis and contains commercially sensitive and valuable information. No part of its content may be provided to any person without our prior written consent. This data sheet is not an offer capable of acceptance. The information contained in this data sheet is, to our knowledge and information, accurate, but it may contain typographical errors and we do not warrant the completeness or accuracy of the information contained herein. Any offer by you to purchase of the equipment described in this data sheet shall be subject to our standard terms and conditions of sale. The Equipment being quoted is described as used, and is being sold "AS IS, WHERE IS" with all defects, known or unknown, entirely at Buyer's own risk and reliance solely upon Buyer's own inspection of the goods and without reliance upon any representation or description by Seller or seller's representative concerning the goods.



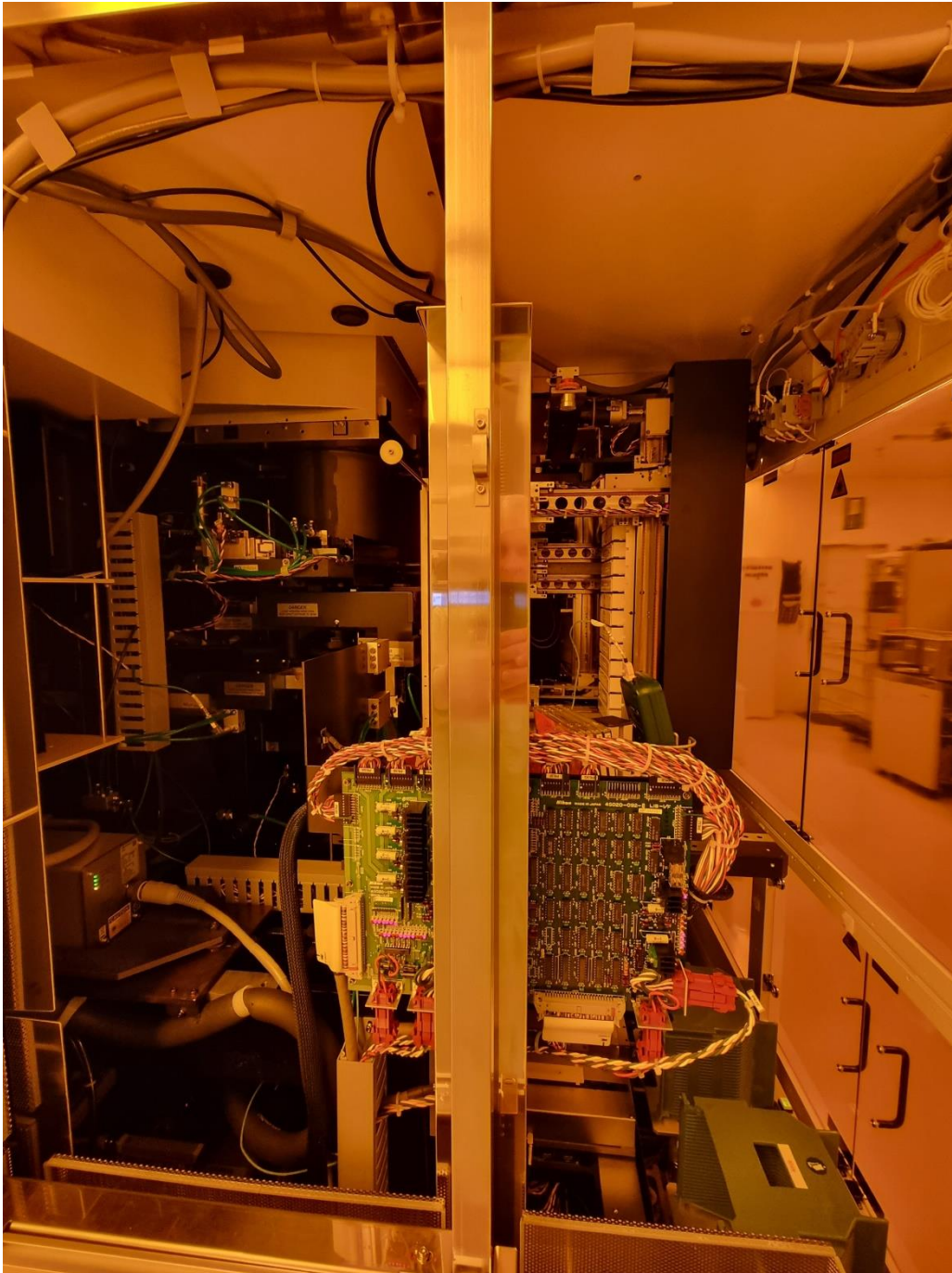
## PTW GROUP



This data sheet is provided to you on a strictly confidential basis and contains commercially sensitive and valuable information. No part of its content may be provided to any person without our prior written consent. This data sheet is not an offer capable of acceptance. The information contained in this data sheet is, to our knowledge and information, accurate, but it may contain typographical errors and we do not warrant the completeness or accuracy of the information contained herein. Any offer by you to purchase of the equipment described in this data sheet shall be subject to our standard terms and conditions of sale. The Equipment being quoted is described as used, and is being sold "AS IS, WHERE IS" with all defects, known or unknown, entirely at Buyer's own risk and reliance solely upon Buyer's own inspection of the goods and without reliance upon any representation or description by Seller or seller's representative concerning the goods.



## PTW GROUP

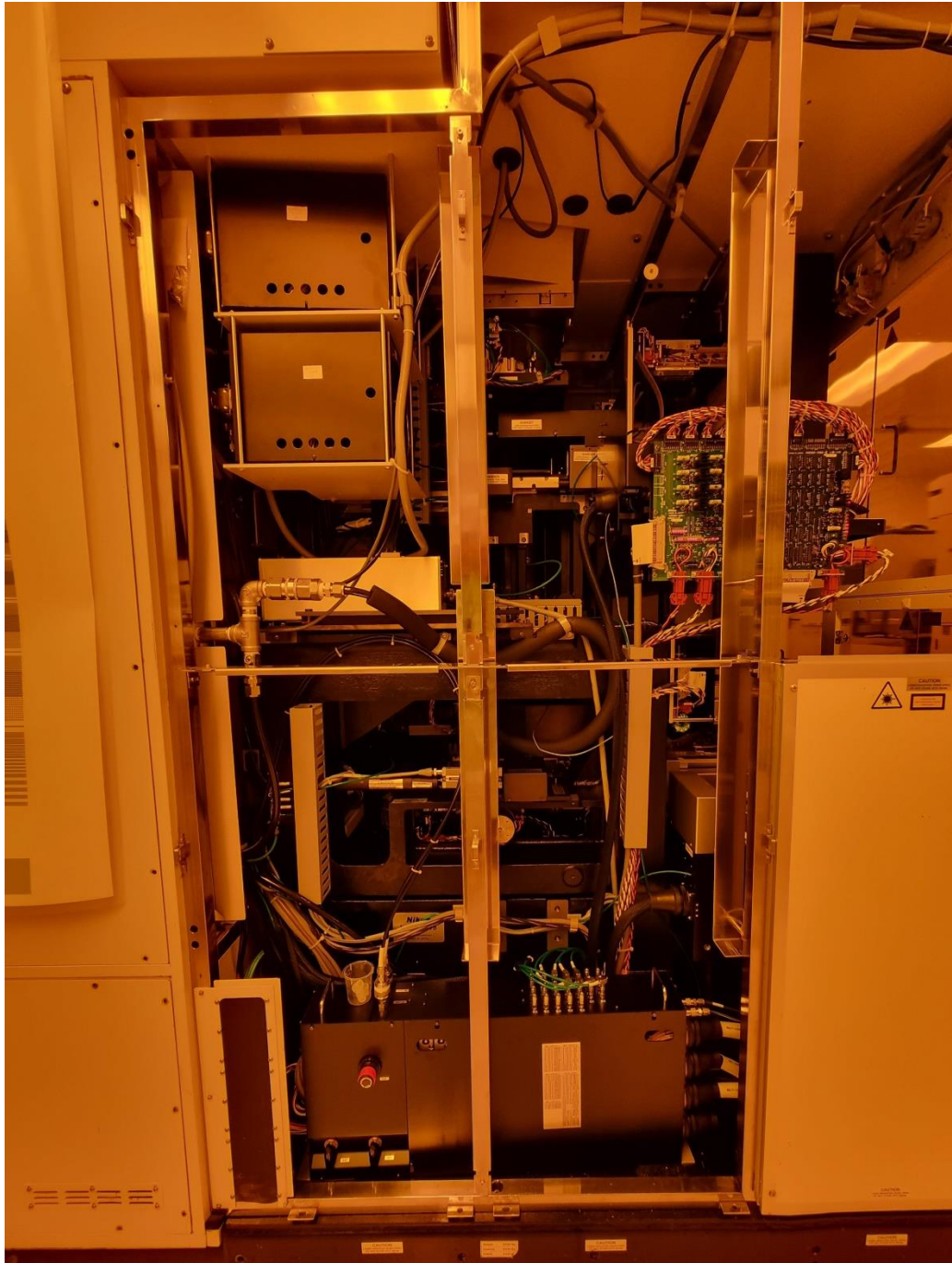


This data sheet is provided to you on a strictly confidential basis and contains commercially sensitive and valuable information. No part of its content may be provided to any person without our prior written consent. This data sheet is not an offer capable of acceptance. The information contained in this data sheet is, to our knowledge and information, accurate, but it may contain typographical errors and we do not warrant the completeness or accuracy of the information contained herein. Any offer by you to purchase of the equipment described in this data sheet shall be subject to our standard terms and conditions of sale. The Equipment being quoted is described as used, and is being sold "AS IS, WHERE IS" with all defects, known or unknown, entirely at Buyer's own risk and reliance solely upon Buyer's own inspection of the goods and without reliance upon any representation or description by Seller or seller's representative concerning the goods.





## PTW GROUP



This data sheet is provided to you on a strictly confidential basis and contains commercially sensitive and valuable information. No part of its content may be provided to any person without our prior written consent. This data sheet is not an offer capable of acceptance. The information contained in this data sheet is, to our knowledge and information, accurate, but it may contain typographical errors and we do not warrant the completeness or accuracy of the information contained herein. Any offer by you to purchase of the equipment described in this data sheet shall be subject to our standard terms and conditions of sale. The Equipment being quoted is described as used, and is being sold "AS IS, WHERE IS" with all defects, known or unknown, entirely at Buyer's own risk and reliance solely upon Buyer's own inspection of the goods and without reliance upon any representation or description by Seller or seller's representative concerning the goods.



## PTW GROUP



This data sheet is provided to you on a strictly confidential basis and contains commercially sensitive and valuable information. No part of its content may be provided to any person without our prior written consent. This data sheet is not an offer capable of acceptance. The information contained in this data sheet is, to our knowledge and information, accurate, but it may contain typographical errors and we do not warrant the completeness or accuracy of the information contained herein. Any offer by you to purchase of the equipment described in this data sheet shall be subject to our standard terms and conditions of sale. The Equipment being quoted is described as used, and is being sold "AS IS, WHERE IS" with all defects, known or unknown, entirely at Buyer's own risk and reliance solely upon Buyer's own inspection of the goods and without reliance upon any representation or description by Seller or seller's representative concerning the goods.



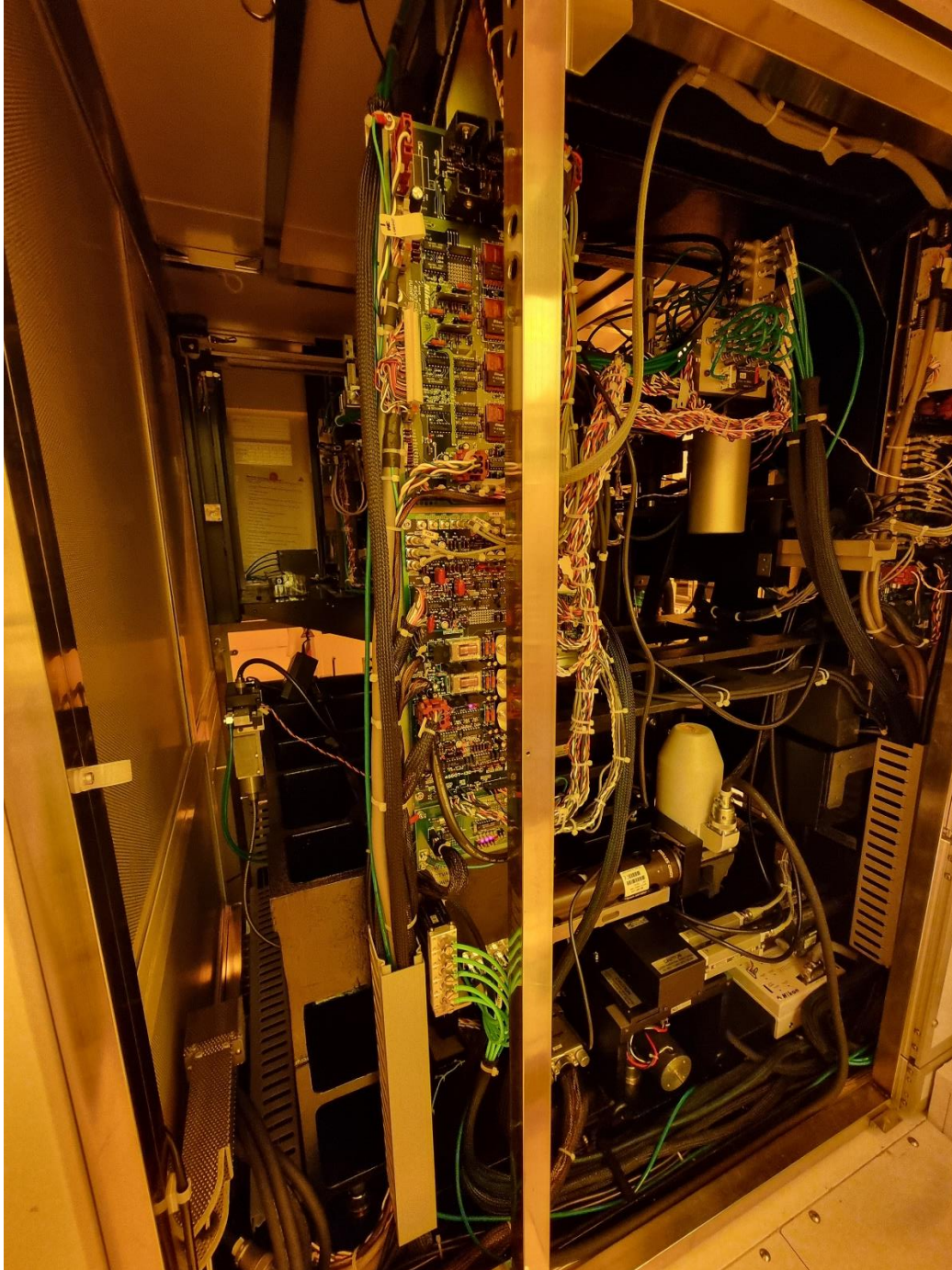
## PTW GROUP



This data sheet is provided to you on a strictly confidential basis and contains commercially sensitive and valuable information. No part of its content may be provided to any person without our prior written consent. This data sheet is not an offer capable of acceptance. The information contained in this data sheet is, to our knowledge and information, accurate, but it may contain typographical errors and we do not warrant the completeness or accuracy of the information contained herein. Any offer by you to purchase of the equipment described in this data sheet shall be subject to our standard terms and conditions of sale. The Equipment being quoted is described as used, and is being sold "AS IS, WHERE IS" with all defects, known or unknown, entirely at Buyer's own risk and reliance solely upon Buyer's own inspection of the goods and without reliance upon any representation or description by Seller or seller's representative concerning the goods.



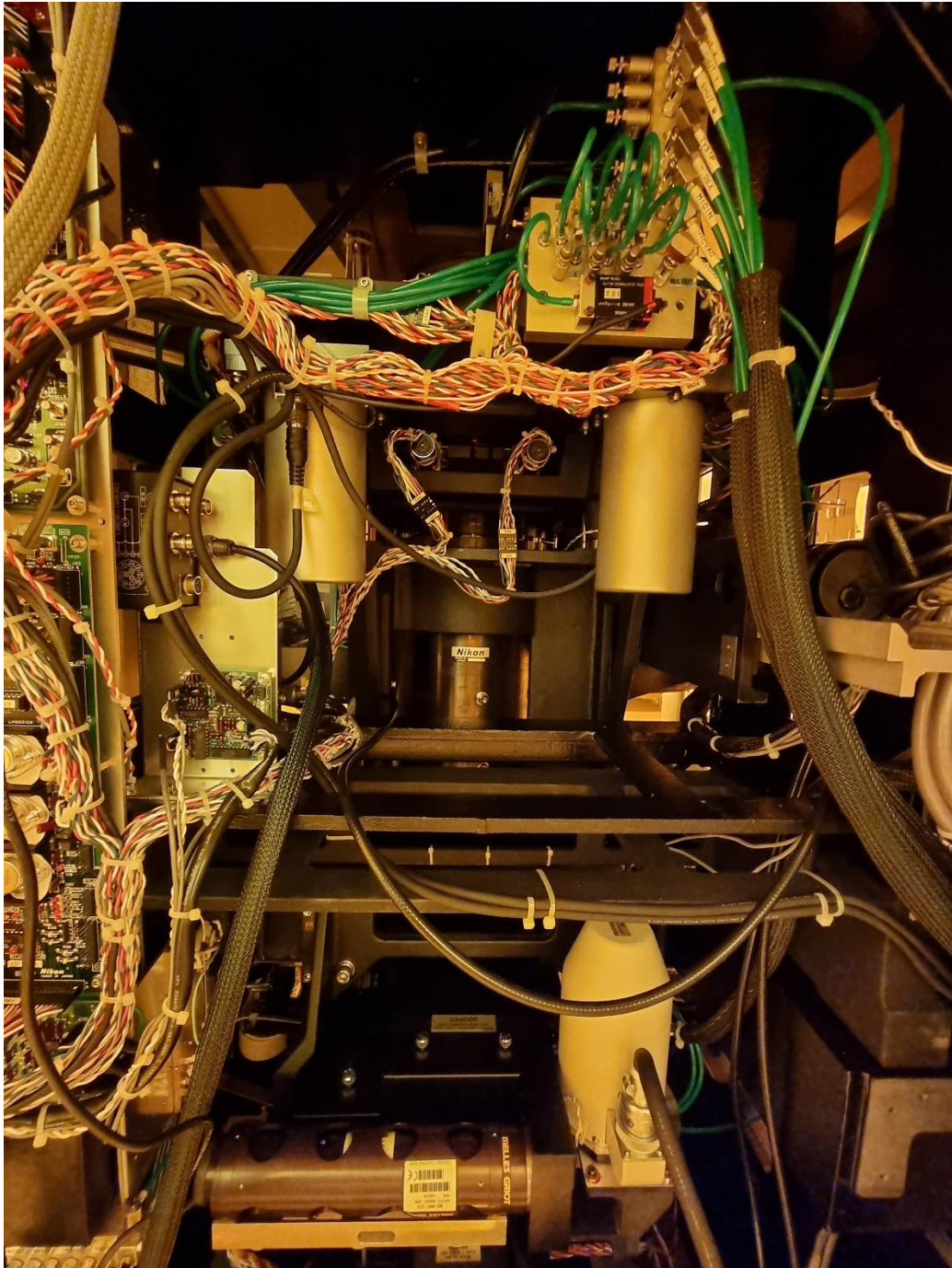
## PTW GROUP



This data sheet is provided to you on a strictly confidential basis and contains commercially sensitive and valuable information. No part of its content may be provided to any person without our prior written consent. This data sheet is not an offer capable of acceptance. The information contained in this data sheet is, to our knowledge and information, accurate, but it may contain typographical errors and we do not warrant the completeness or accuracy of the information contained herein. Any offer by you to purchase of the equipment described in this data sheet shall be subject to our standard terms and conditions of sale. The Equipment being quoted is described as used, and is being sold "AS IS, WHERE IS" with all defects, known or unknown, entirely at Buyer's own risk and reliance solely upon Buyer's own inspection of the goods and without reliance upon any representation or description by Seller or seller's representative concerning the goods.



## PTW GROUP



This data sheet is provided to you on a strictly confidential basis and contains commercially sensitive and valuable information. No part of its content may be provided to any person without our prior written consent. This data sheet is not an offer capable of acceptance. The information contained in this data sheet is, to our knowledge and information, accurate, but it may contain typographical errors and we do not warrant the completeness or accuracy of the information contained herein. Any offer by you to purchase of the equipment described in this data sheet shall be subject to our standard terms and conditions of sale. The Equipment being quoted is described as used, and is being sold "AS IS, WHERE IS" with all defects, known or unknown, entirely at Buyer's own risk and reliance solely upon Buyer's own inspection of the goods and without reliance upon any representation or description by Seller or seller's representative concerning the goods.



## PTW GROUP



This data sheet is provided to you on a strictly confidential basis and contains commercially sensitive and valuable information. No part of its content may be provided to any person without our prior written consent. This data sheet is not an offer capable of acceptance. The information contained in this data sheet is, to our knowledge and information, accurate, but it may contain typographical errors and we do not warrant the completeness or accuracy of the information contained herein. Any offer by you to purchase of the equipment described in this data sheet shall be subject to our standard terms and conditions of sale. The Equipment being quoted is described as used, and is being sold "AS IS, WHERE IS" with all defects, known or unknown, entirely at Buyer's own risk and reliance solely upon Buyer's own inspection of the goods and without reliance upon any representation or description by Seller or seller's representative concerning the goods.



## PTW GROUP



This data sheet is provided to you on a strictly confidential basis and contains commercially sensitive and valuable information. No part of its content may be provided to any person without our prior written consent. This data sheet is not an offer capable of acceptance. The information contained in this data sheet is, to our knowledge and information, accurate, but it may contain typographical errors and we do not warrant the completeness or accuracy of the information contained herein. Any offer by you to purchase of the equipment described in this data sheet shall be subject to our standard terms and conditions of sale. The Equipment being quoted is described as used, and is being sold "AS IS, WHERE IS" with all defects, known or unknown, entirely at Buyer's own risk and reliance solely upon Buyer's own inspection of the goods and without reliance upon any representation or description by Seller or seller's representative concerning the goods.



## PTW GROUP

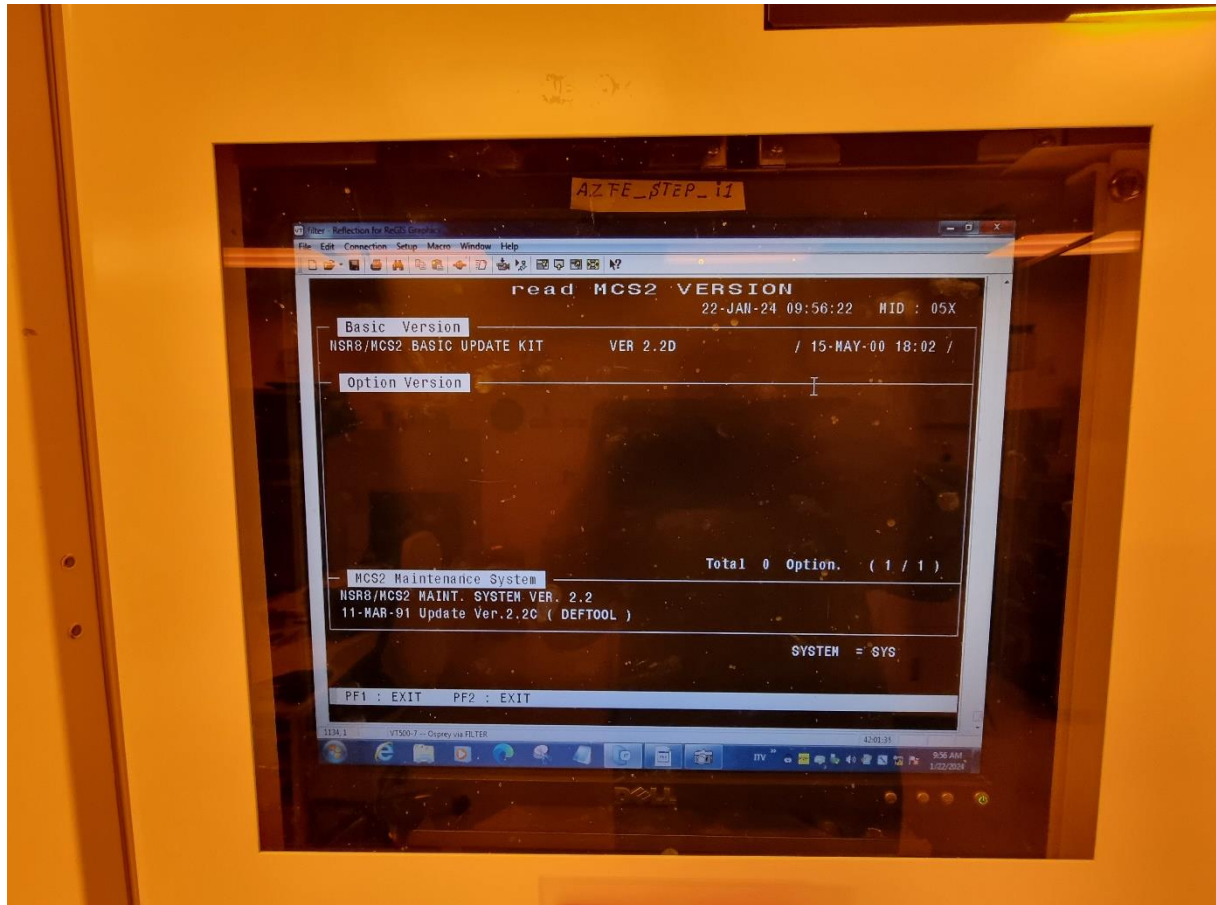


This data sheet is provided to you on a strictly confidential basis and contains commercially sensitive and valuable information. No part of its content may be provided to any person without our prior written consent. This data sheet is not an offer capable of acceptance. The information contained in this data sheet is, to our knowledge and information, accurate, but it may contain typographical errors and we do not warrant the completeness or accuracy of the information contained herein. Any offer by you to purchase of the equipment described in this data sheet shall be subject to our standard terms and conditions of sale. The Equipment being quoted is described as used, and is being sold "AS IS, WHERE IS" with all defects, known or unknown, entirely at Buyer's own risk and reliance solely upon Buyer's own inspection of the goods and without reliance upon any representation or description by Seller or seller's representative concerning the goods.





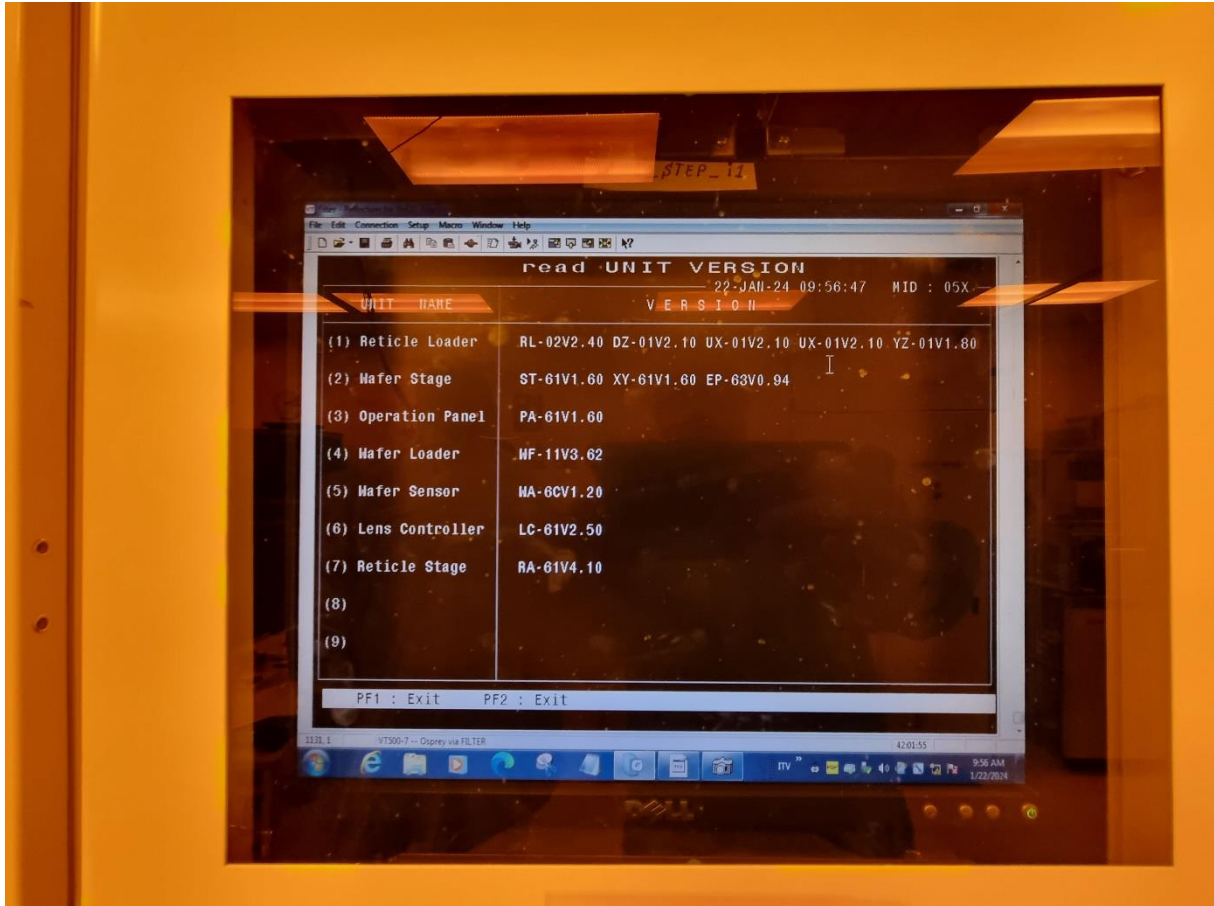
# PTW GROUP



This data sheet is provided to you on a strictly confidential basis and contains commercially sensitive and valuable information. No part of its content may be provided to any person without our prior written consent. This data sheet is not an offer capable of acceptance. The information contained in this data sheet is, to our knowledge and information, accurate, but it may contain typographical errors and we do not warrant the completeness or accuracy of the information contained herein. Any offer by you to purchase of the equipment described in this data sheet shall be subject to our standard terms and conditions of sale. The Equipment being quoted is described as used, and is being sold "AS IS, WHERE IS" with all defects, known or unknown, entirely at Buyer's own risk and reliance solely upon Buyer's own inspection of the goods and without reliance upon any representation or description by Seller or seller's representative concerning the goods.



# PTW GROUP



This data sheet is provided to you on a strictly confidential basis and contains commercially sensitive and valuable information. No part of its content may be provided to any person without our prior written consent. This data sheet is not an offer capable of acceptance. The information contained in this data sheet is, to our knowledge and information, accurate, but it may contain typographical errors and we do not warrant the completeness or accuracy of the information contained herein. Any offer by you to purchase of the equipment described in this data sheet shall be subject to our standard terms and conditions of sale. The Equipment being quoted is described as used, and is being sold "AS IS, WHERE IS" with all defects, known or unknown, entirely at Buyer's own risk and reliance solely upon Buyer's own inspection of the goods and without reliance upon any representation or description by Seller or seller's representative concerning the goods.



# PTW GROUP



This data sheet is provided to you on a strictly confidential basis and contains commercially sensitive and valuable information. No part of its content may be provided to any person without our prior written consent. This data sheet is not an offer capable of acceptance. The information contained in this data sheet is, to our knowledge and information, accurate, but it may contain typographical errors and we do not warrant the completeness or accuracy of the information contained herein. Any offer by you to purchase of the equipment described in this data sheet shall be subject to our standard terms and conditions of sale. The Equipment being quoted is described as used, and is being sold "AS IS, WHERE IS" with all defects, known or unknown, entirely at Buyer's own risk and reliance solely upon Buyer's own inspection of the goods and without reliance upon any representation or description by Seller or seller's representative concerning the goods.



# PTW GROUP



This data sheet is provided to you on a strictly confidential basis and contains commercially sensitive and valuable information. No part of its content may be provided to any person without our prior written consent. This data sheet is not an offer capable of acceptance. The information contained in this data sheet is, to our knowledge and information, accurate, but it may contain typographical errors and we do not warrant the completeness or accuracy of the information contained herein. Any offer by you to purchase of the equipment described in this data sheet shall be subject to our standard terms and conditions of sale. The Equipment being quoted is described as used, and is being sold "AS IS, WHERE IS" with all defects, known or unknown, entirely at Buyer's own risk and reliance solely upon Buyer's own inspection of the goods and without reliance upon any representation or description by Seller or seller's representative concerning the goods.



# PTW GROUP



This data sheet is provided to you on a strictly confidential basis and contains commercially sensitive and valuable information. No part of its content may be provided to any person without our prior written consent. This data sheet is not an offer capable of acceptance. The information contained in this data sheet is, to our knowledge and information, accurate, but it may contain typographical errors and we do not warrant the completeness or accuracy of the information contained herein. Any offer by you to purchase of the equipment described in this data sheet shall be subject to our standard terms and conditions of sale. The Equipment being quoted is described as used, and is being sold "AS IS, WHERE IS" with all defects, known or unknown, entirely at Buyer's own risk and reliance solely upon Buyer's own inspection of the goods and without reliance upon any representation or description by Seller or seller's representative concerning the goods.



## PTW GROUP

All Equipment is offered subject to prior sale. This item will be quoted based upon specific terms and configuration required.

Interested parties may contact PTW ASIA PTE LTD at: [ask@ptwsingapore.com](mailto:ask@ptwsingapore.com)

Visit our web site at [www.ptwgroup.com](http://www.ptwgroup.com) © 2024 PTW ASIA PTE LTD

This data sheet is provided to you on a strictly confidential basis and contains commercially sensitive and valuable information. No part of its content may be provided to any person without our prior written consent. This data sheet is not an offer capable of acceptance. The information contained in this data sheet is, to our knowledge and information, accurate, but it may contain typographical errors and we do not warrant the completeness or accuracy of the information contained herein. Any offer by you to purchase of the equipment described in this data sheet shall be subject to our standard terms and conditions of sale. The Equipment being quoted is described as used, and is being sold "AS IS, WHERE IS" with all defects, known or unknown, entirely at Buyer's own risk and reliance solely upon Buyer's own inspection of the goods and without reliance upon any representation or description by Seller or seller's representative concerning the goods.