



PTW GROUP

SEMITOOL SST-C-632-280-K – SPRAY SOLVENT TOOL

Manufacturer	SEMITOOL
Model	SST-C-632-280-K
Product Description	Spray Solvent Tool
Other Information	NIL
Year of Manufacture	1999
Serial Number	F161017
Wafer Size	200 mm (8 inch)
Number of Chamber	2
Number of CHC	3
Number of Load Port (Type)	NIL Cassette
Condition	Excellent
Missing Items	NIL
Conversion Capability	i) Refurbish to specification

This data sheet is provided to you on a strictly confidential basis and contains commercially sensitive and valuable information. No part of its content may be provided to any person without our prior written consent. This data sheet is not an offer capable of acceptance. The information contained in this data sheet is, to our knowledge and information, accurate, but it may contain typographical errors and we do not warrant the completeness or accuracy of the information contained herein. Any offer by you to purchase of the equipment described in this data sheet shall be subject to our standard terms and conditions of sale. The Equipment being quoted is described as USED.



PTW GROUP

SEMITOOL® 655 W. RESERVE DR., KALISPELL, MONTANA 59901			
MODEL NO.	804-C-632-280-K	SERIAL NO.	F161017
SUPPLY VOLTAGE	200/100 VAC	VOLTS	
PHASE	3PH 4WT/1PH 3WI	PHASE	ELECTRICAL DIAGRAM NO. 16430
FULL LOAD CURRENT	50/5	AMPS	FREQUENCY 50/60 Hz
LARGEST MOTOR OR LOAD	10 (DINK HTR 15)	AMPS	YEAR OF MANUFACTURE 1999
SHORT CIRCUIT INTERRUPT	2,500	AMPS	

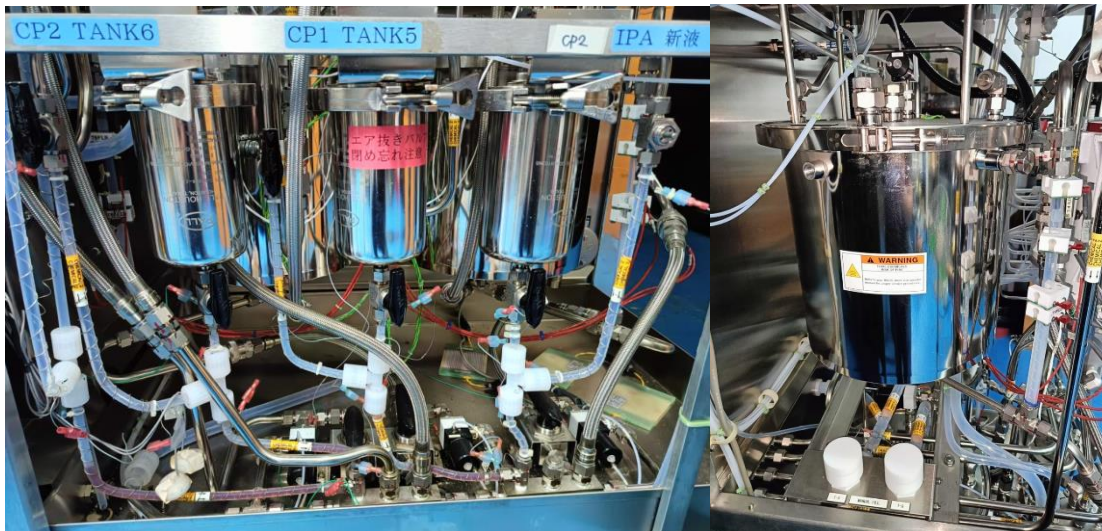
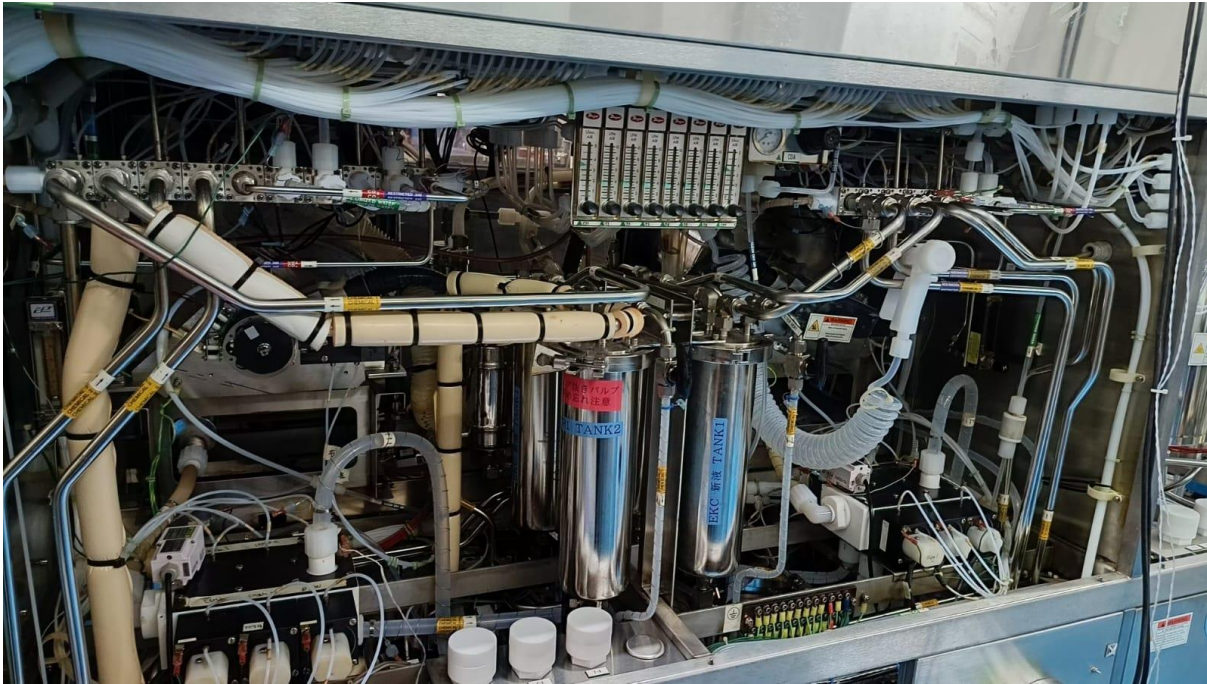
OVERCURRENT PROTECTION PROVIDED AT MACHINE SUPPLY TERMINALS
U.S. PATENT NO. 4,300,581 FOREIGN PATENTS PENDING



This data sheet is provided to you on a strictly confidential basis and contains commercially sensitive and valuable information. No part of its content may be provided to any person without our prior written consent. This data sheet is not an offer capable of acceptance. The information contained in this data sheet is, to our knowledge and information, accurate, but it may contain typographical errors and we do not warrant the completeness or accuracy of the information contained herein. Any offer by you to purchase of the equipment described in this data sheet shall be subject to our standard terms and conditions of sale. The Equipment being quoted is described as USED.



PTW GROUP



This data sheet is provided to you on a strictly confidential basis and contains commercially sensitive and valuable information. No part of its content may be provided to any person without our prior written consent. This data sheet is not an offer capable of acceptance. The information contained in this data sheet is, to our knowledge and information, accurate, but it may contain typographical errors and we do not warrant the completeness or accuracy of the information contained herein. Any offer by you to purchase of the equipment described in this data sheet shall be subject to our standard terms and conditions of sale. The Equipment being quoted is described as USED.



PTW GROUP



All Equipment is offered subject to prior sale. This item will be quoted based upon specific terms and configuration required. Interested parties may contact PTW Asia Pte Ltd at: ask@ptwsingapore.com

Visit our web site at www.ptwgroup.com © 2024 PTW ASIA PTE LTD.

This data sheet is provided to you on a strictly confidential basis and contains commercially sensitive and valuable information. No part of its content may be provided to any person without our prior written consent. This data sheet is not an offer capable of acceptance. The information contained in this data sheet is, to our knowledge and information, accurate, but it may contain typographical errors and we do not warrant the completeness or accuracy of the information contained herein. Any offer by you to purchase of the equipment described in this data sheet shall be subject to our standard terms and conditions of sale. The Equipment being quoted is described as USED.