

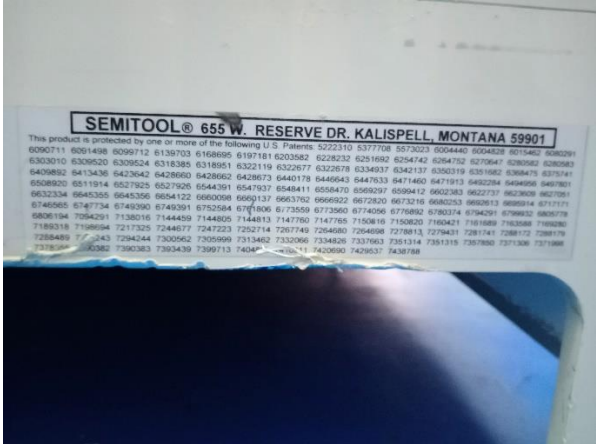
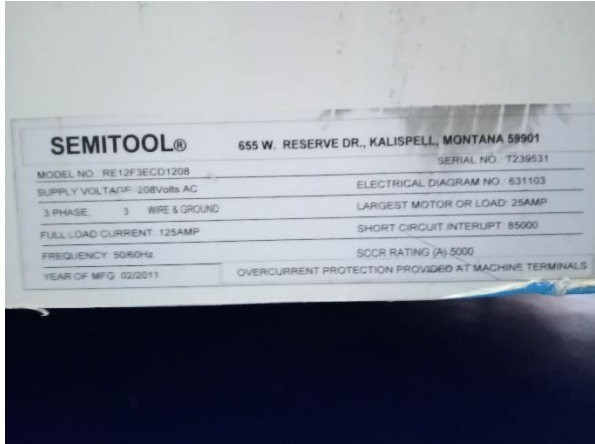


PTW ASIA PTE LTD

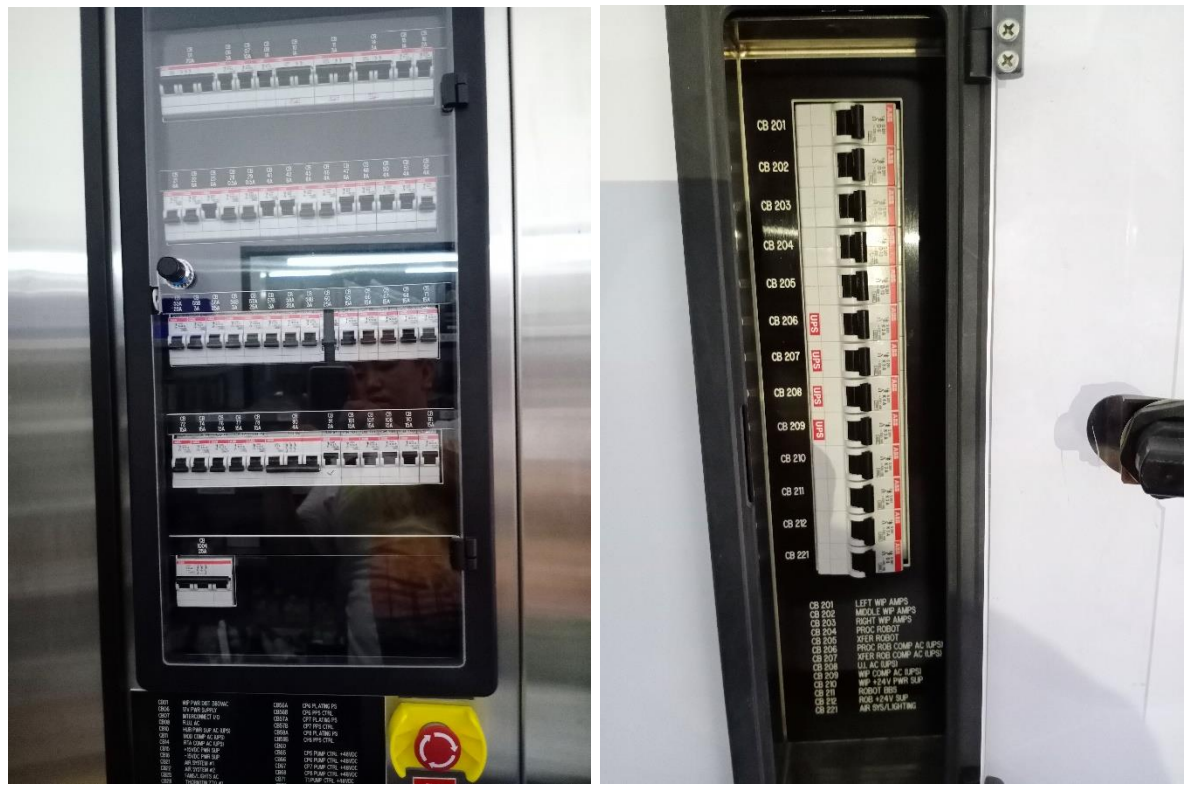
Semitoool Raider ECD (Electro Chemical Deposition)	
Manufacturer	Semitoool
Model	Raider
Product Description	ECD (Electro Chemical Deposition)
Year of Manufacture	2011
Serial Number	T239531
Wafer size	300mm
3 x FOUP (25 wafers)	
ULPA filters	
Control Monitor	
Maintenance monitor	
10 chamber mainframe	
CP1	Bevel Etch / Clean
CP2	Bevel Etch / Clean
CP5	ECD Cu
CP6	ECD Cu
CP7	ECD Cu
CP8	ECD Cu
CP10	SRD
CP11	SRD
CP12	Bevel Etch / Clean
Tank 1	H ₂ SO ₂
Tank 2	H ₂ O ₂
Tank 3	Cu A Catholyte
Tank 4	Cu A Anolyte
Tank 5	Cu B Catholyte
Tank 6	Cu B Anolyte
Tank 7	Do B/SLE Catholyte
RTA profile	
Voltage variation analysis	
Spectrology analyst	

This data sheet is provided to you on a strictly confidential basis and contains commercially sensitive and valuable information. No part of its content may be provided to any person without our prior written consent. This data sheet is not an offer capable of acceptance. The information contained in this data sheet is, to our knowledge and information, accurate, but it may contain typographical errors and we do not warrant the completeness or accuracy of the information contained herein. Any offer by you to purchase of the equipment described in this data sheet shall be subject to our standard terms and conditions of sale. The Equipment being quoted is described as used, and is being sold "AS IS, WHERE IS" with all defects, known or unknown, entirely at Buyer's own risk and reliance solely upon Buyer's own inspection of the goods and without reliance upon any representation or description by Seller or seller's representative concerning the goods.

RTA probe
Voltage variation analysts
Spectrology analyst
Tan 4 (65 liters) – Anolyte
Ph probe
Spectrology analyst
Fire Suppressio



This data sheet is provided to you on a strictly confidential basis and contains commercially sensitive and valuable information. No part of its content may be provided to any person without our prior written consent. This data sheet is not an offer capable of acceptance. The information contained in this data sheet is, to our knowledge and information, accurate, but it may contain typographical errors and we do not warrant the completeness or accuracy of the information contained herein. Any offer by you to purchase of the equipment described in this data sheet shall be subject to our standard terms and conditions of sale. The Equipment being quoted is described as used, and is being sold "AS IS, WHERE IS" with all defects, known or unknown, entirely at Buyer's own risk and reliance solely upon Buyer's own inspection of the goods and without reliance upon any representation or description by Seller or seller's representative concerning the goods.



This data sheet is provided to you on a strictly confidential basis and contains commercially sensitive and valuable information. No part of its content may be provided to any person without our prior written consent. This data sheet is not an offer capable of acceptance. The information contained in this data sheet is, to our knowledge and information, accurate, but it may contain typographical errors and we do not warrant the completeness or accuracy of the information contained herein. Any offer by you to purchase of the equipment described in this data sheet shall be subject to our standard terms and conditions of sale. The Equipment being quoted is described as used, and is being sold "AS IS, WHERE IS" with all defects, known or unknown, entirely at Buyer's own risk and reliance solely upon Buyer's own inspection of the goods and without reliance upon any representation or description by Seller or seller's representative concerning the goods.

CB01	WIP PWR DIST 380VAC	CB56A	CP6 PLATING PS
CB06	12V PWR SUPPLY	CB56B	CP6 PPS CTRL
CB07	INTERCONNECT I/O	CB57A	CP7 PLATING PS
CB08	R.U.L. AC	CB57B	CP7 PPS CTRL
CB10	HUB PWR SUP AC (UPS)	CB58A	CP8 PLATING PS
CB11	MOD COMP AC (UPS)	CB58B	CP8 PPS CTRL
CB14	RTA COMP AC (UPS)	CB60	
CB15	+16VDC PWR SUP	CB65	CP5 PUMP CTRL +48VDC
CB16	-16VDC PWR SUP	CB66	CP6 PUMP CTRL +48VDC
CB21	AIR SYSTEM #1	CB67	CP7 PUMP CTRL +48VDC
CB22	AIR SYSTEM #2	CB68	CP8 PUMP CTRL +48VDC
CB25	FANS/LIGHTS AC	CB71	T1 PUMP CTRL +48VDC
CB28	THORNTON T70 #1	CB72	T2 PUMP CTRL +48VDC
CB29	THORNTON T70 #2	CB74	T4 PUMP CTRL +48VDC
CB41	CP1 LFT/ROT AC	CB76	T6 PUMP CTRL +48VDC
CB42	CP2 LFT/ROT AC	CB77	T7 PUMP CTRL +48VDC
CB45	CP5 LFT/ROT AC	CB78	T8 PUMP CTRL +48VDC
CB46	CP6 LFT/ROT AC	CB80	VAC PUMP AC
CB47	CP7 LFT/ROT AC	CB101	CP1 AMP TRAY +48VDC
CB48	CP8 LFT/ROT AC	CB107	CP7 AMP TRAY +48VDC
CB50	CP9 LFT/ROT AC	CB108	CP8 AMP TRAY +48VDC
CB51	CP12 LFT/ROT AC	CB110	CP10 AMP TRAY +48VDC
CB52	CP12 LFT/ROT AC	CB111	CP11 AMP TRAY +48VDC
CB55A	CP5 PLATING PS	CB1004	48V PWR SUP#1 AC
CB56B	CP5 PPS CTRL	CB91	EPL HUB/EPL CTRL



This data sheet is provided to you on a strictly confidential basis and contains commercially sensitive and valuable information. No part of its content may be provided to any person without our prior written consent. This data sheet is not an offer capable of acceptance. The information contained in this data sheet is, to our knowledge and information, accurate, but it may contain typographical errors and we do not warrant the completeness or accuracy of the information contained herein. Any offer by you to purchase of the equipment described in this data sheet shall be subject to our standard terms and conditions of sale. The Equipment being quoted is described as used, and is being sold "AS IS, WHERE IS" with all defects, known or unknown, entirely at Buyer's own risk and reliance solely upon Buyer's own inspection of the goods and without reliance upon any representation or description by Seller or seller's representative concerning the goods.



PTW ASIA PTE LTD



All Equipment is offered subject to prior sale. This item will be quoted based upon specific terms and configuration required. Interested parties may contact PTW Asia Pte Ltd at:

ask@ptwsingapore.com

Visit our web site at www.ptwsingapore.com © 2019 PTW ASIA PTE LTD.

This data sheet is provided to you on a strictly confidential basis and contains commercially sensitive and valuable information. No part of its content may be provided to any person without our prior written consent. This data sheet is not an offer capable of acceptance. The information contained in this data sheet is, to our knowledge and information, accurate, but it may contain typographical errors and we do not warrant the completeness or accuracy of the information contained herein. Any offer by you to purchase of the equipment described in this data sheet shall be subject to our standard terms and conditions of sale. The Equipment being quoted is described as used, and is being sold "AS IS, WHERE IS" with all defects, known or unknown, entirely at Buyer's own risk and reliance solely upon Buyer's own inspection of the goods and without reliance upon any representation or description by Seller or seller's representative concerning the goods.