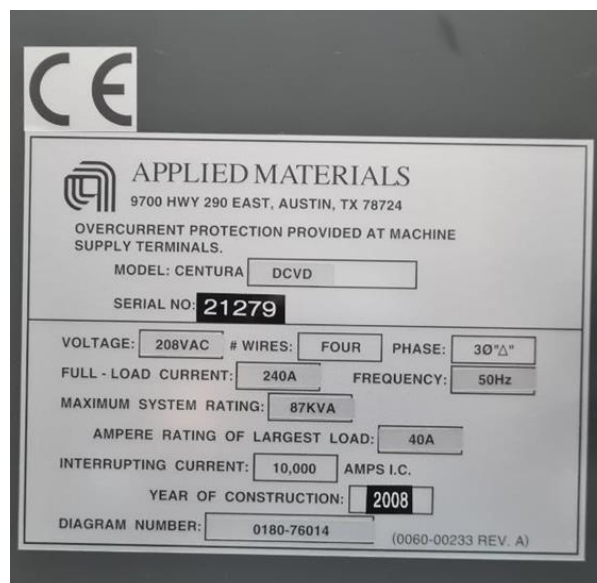


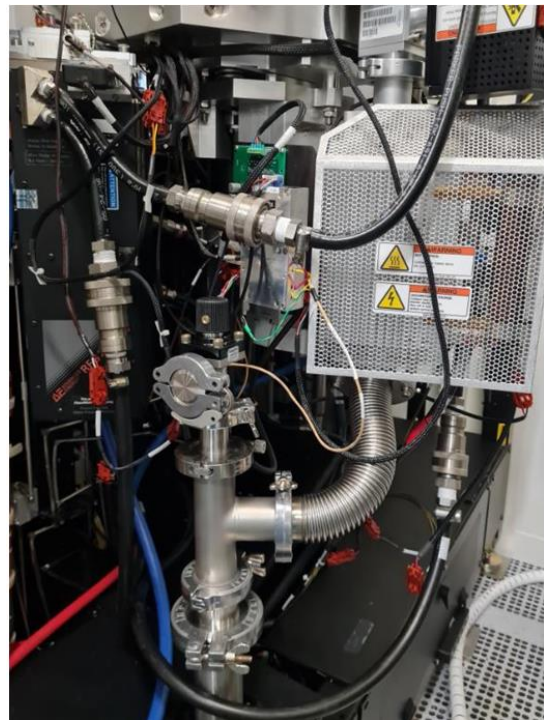
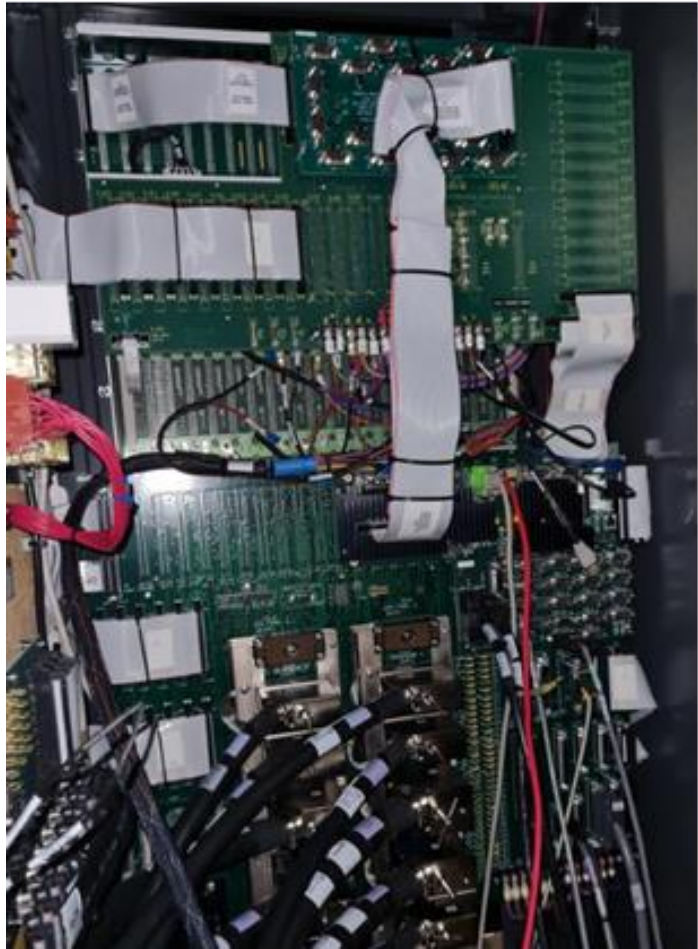


PTW ASIA PTE LTD

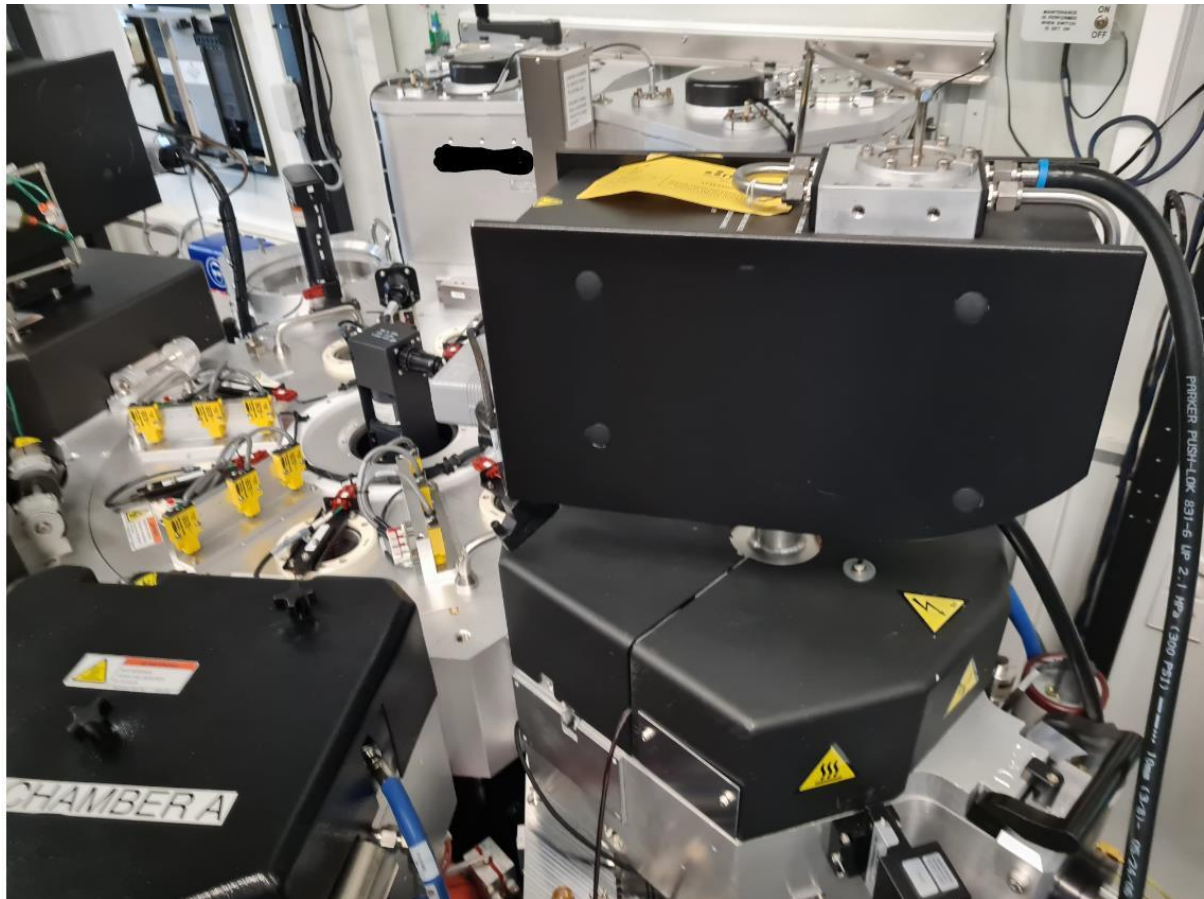
| Centura DCVD | |
|---------------------|---|
| Manufacturer | Applied Materials |
| Model | Centura CVD |
| Description | Plasma, CVD |
| Other information | |
| Year of manufacture | 2008 |
| Serial number | 21279 |
| Site size | 8 |
| Condition | good |
| Number of Units | |
| Product description | Software Version B5226 |
| Mainframe version: | Centura 1 5200 DCVD |
| Type of chuck: | E-Chucks in positions C+D, ceramic heaters in positions A+B |
| Process: | Chamber A+B Teos BPSG, chambers C+D Etch PE SILANE DXZ DARC |
| Chiller: | Neslab Steelhead 0 (original) |
| | |
| | 208 VAC, 4 Wire, 240A load current, 50Hz |



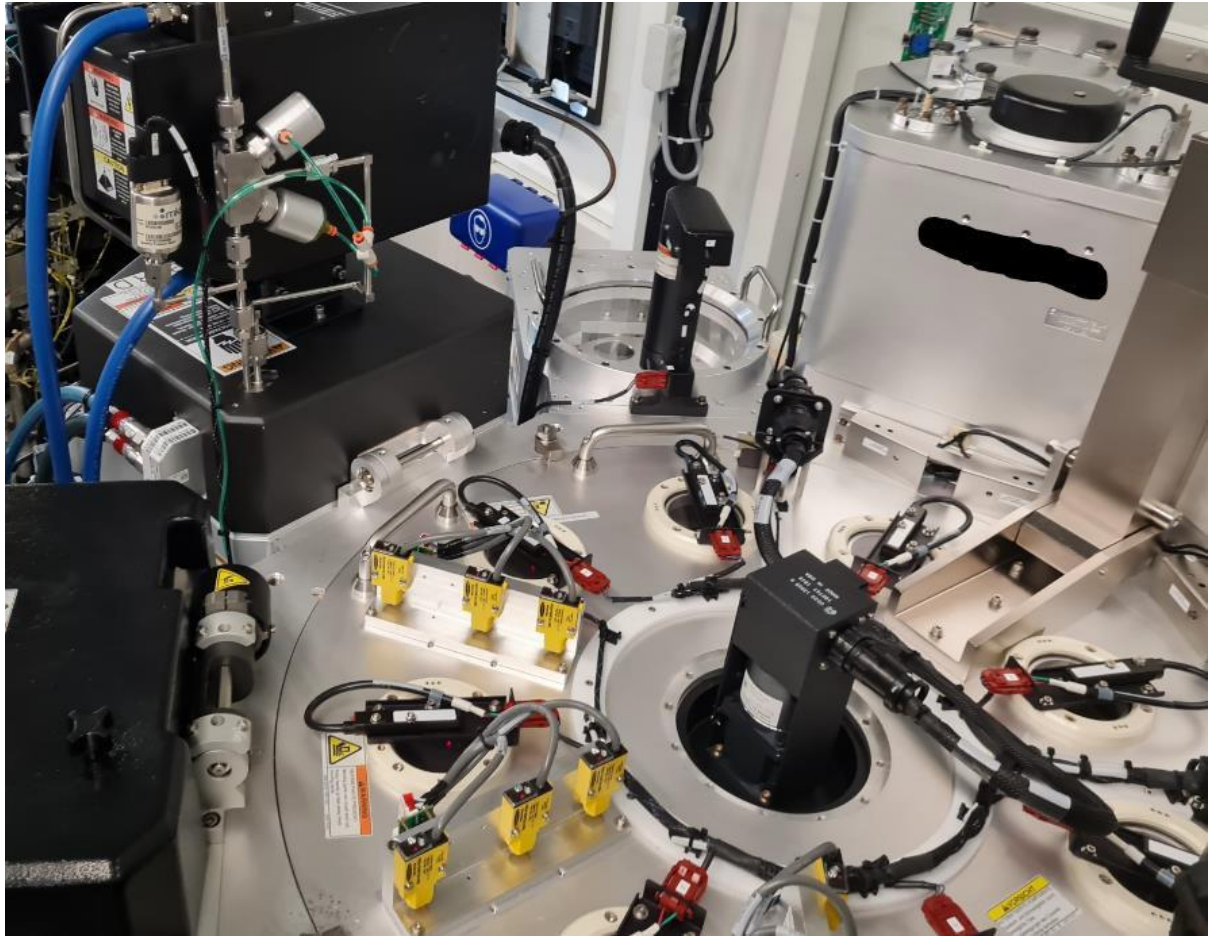
This data sheet is provided to you on a strictly confidential basis and contains commercially sensitive and valuable information. No part of its content may be provided to any person without our prior written consent. This data sheet is not an offer capable of acceptance. The information contained in this data sheet is, to our knowledge and information, accurate, but it may contain typographical errors and we do not warrant the completeness or accuracy of the information contained herein. Any offer by you to purchase of the equipment described in this data sheet shall be subject to our standard terms and conditions of sale. The Equipment being quoted is described as used, and is being sold "AS IS, WHERE IS" with all defects, known or unknown, entirely at Buyer's own risk and reliance solely upon Buyer's own inspection of the goods and without reliance upon any representation or description by Seller or seller's representative concerning the goods.



This data sheet is provided to you on a strictly confidential basis and contains commercially sensitive and valuable information. No part of its content may be provided to any person without our prior written consent. This data sheet is not an offer capable of acceptance. The information contained in this data sheet is, to our knowledge and information, accurate, but it may contain typographical errors and we do not warrant the completeness or accuracy of the information contained herein. Any offer by you to purchase of the equipment described in this data sheet shall be subject to our standard terms and conditions of sale. The Equipment being quoted is described as used, and is being sold "AS IS, WHERE IS" with all defects, known or unknown, entirely at Buyer's own risk and reliance solely upon Buyer's own inspection of the goods and without reliance upon any representation or description by Seller or seller's representative concerning the goods.



This data sheet is provided to you on a strictly confidential basis and contains commercially sensitive and valuable information. No part of its content may be provided to any person without our prior written consent. This data sheet is not an offer capable of acceptance. The information contained in this data sheet is, to our knowledge and information, accurate, but it may contain typographical errors and we do not warrant the completeness or accuracy of the information contained herein. Any offer by you to purchase of the equipment described in this data sheet shall be subject to our standard terms and conditions of sale. The Equipment being quoted is described as used, and is being sold "AS IS, WHERE IS" with all defects, known or unknown, entirely at Buyer's own risk and reliance solely upon Buyer's own inspection of the goods and without reliance upon any representation or description by Seller or seller's representative concerning the goods.



This data sheet is provided to you on a strictly confidential basis and contains commercially sensitive and valuable information. No part of its content may be provided to any person without our prior written consent. This data sheet is not an offer capable of acceptance. The information contained in this data sheet is, to our knowledge and information, accurate, but it may contain typographical errors and we do not warrant the completeness or accuracy of the information contained herein. Any offer by you to purchase of the equipment described in this data sheet shall be subject to our standard terms and conditions of sale. The Equipment being quoted is described as used, and is being sold "AS IS, WHERE IS" with all defects, known or unknown, entirely at Buyer's own risk and reliance solely upon Buyer's own inspection of the goods and without reliance upon any representation or description by Seller or seller's representative concerning the goods.

PTW ASIA PTE LTD



All Equipment is offered subject to prior sale. This item will be quoted based upon specific terms and configuration required. Interested parties may contact PTW Asia Pte Ltd at:

ask@ptwsingapore.com

Visit our web site at www.ptwsingapore.com © 2019 PTW ASIA PTE LTD.

This data sheet is provided to you on a strictly confidential basis and contains commercially sensitive and valuable information. No part of its content may be provided to any person without our prior written consent. This data sheet is not an offer capable of acceptance. The information contained in this data sheet is, to our knowledge and information, accurate, but it may contain typographical errors and we do not warrant the completeness or accuracy of the information contained herein. Any offer by you to purchase of the equipment described in this data sheet shall be subject to our standard terms and conditions of sale. The Equipment being quoted is described as used, and is being sold "AS IS, WHERE IS" with all defects, known or unknown, entirely at Buyer's own risk and reliance solely upon Buyer's own inspection of the goods and without reliance upon any representation or description by Seller or seller's representative concerning the goods.